

MAY 2020

GROWTH RINGS

Appalachian Forest National Heritage Area News



INSIDE THIS ISSUE

- Page 1** Updates
- Page 2** Task Groups
- Page 3** AmeriCorps Service During COVID-19
- Page 5** Events & Other Announcements

Join Us in June!

Management Planning meetings are now going online! Due to COVID-19, we have suspended in-person meetings, including the May 20th & 21st meetings previously scheduled. Instead, we are going to host a virtual public meeting on...

June 16, 2020 on Zoom!

You are invited to join our virtual meeting, hosted on Zoom! We will introduce the management plan, our consultants, and AFNHA staff to you, our stakeholders. Anyone and everyone is invited to partake in this discussion. Our team will be addressing questions about what a National Heritage Area is, what the management plan is, and how it affects you. Participants can either represent themselves as a stakeholder, or represent an organization they are a part of. We encourage all participants to ask any questions they may have. Our team would love to see you there!

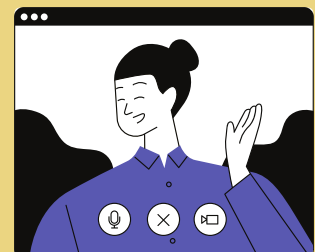
We will release time, details, and the Zoom meeting information in upcoming emails, newsletters, and on our social media. To stay most up to date, like us on Facebook. We chose Zoom because it has video chatting and phone call in options. You do not need a video camera to participate. We are happy to answer any questions you may have about the technology beforehand.

Appalachian Forest National Heritage Area promotes and supports a network of partnerships based around our unique Forest Heritage. We work in 16 West Virginia counties and two counties in Western Maryland.

To learn more about us and the work we do, including our AmeriCorps program, visit afnha.org.

Questions?

Contact planning@afnha.org



Appalachian Forest Discovery Center 2020 Exhibit Opening June 4

Moira Gasior & Sarah Rosenkrans



Sarah Rosenkrans is a second year AmeriCorps serving with AFNHA as the museum associate of the Appalachian Forest Discovery Center in Elkins, WV. Last year, she researched, designed, found items for, and created the exhibit "Creating Culture: Ethnic Groups in the Appalachian Forest Discovery Center". This year, her exhibit is concentrating on public lands and is titled "Exploring OUR Land: Public Land Use in Appalachian Forest National Heritage Area" (opening June 4, 2020). Check out an interview with Sarah below!

Moira: What made AFNHA decide to have public lands be the focus of the 2020 exhibit?

Sarah: It is the 100th anniversary of the designation of Monongahela National Forest, so we wanted to be part of that celebration. However, the Mon is not the only public land in AFNHA, so we decided to dedicate the exhibit to all public land agencies and the great work they do.

Moira: Why should public lands matter to people?

Sarah: Everyone's lives are connected to public land whether they realize it or not. Public lands provide a place to escape everyday life, create fun memories, protect endangered wildlife, and much more. Even if you don't like being in nature, public lands protect our water sources from pollution and reduce society's carbon impact.

Moira: What themes were you looking to highlight in this exhibit?

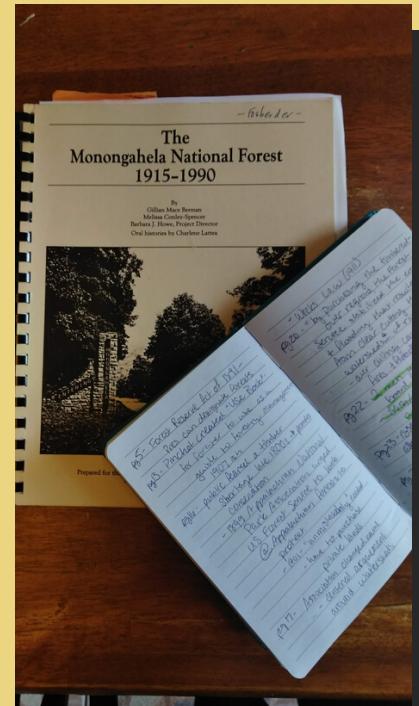
Sarah: The goals of the exhibit are to explain why public lands exist, how they are managed and the many different ways the public uses them, hopefully in a fun way visitors will enjoy. Scattered throughout these sections are Monongahela National Forest Fun Facts in celebration of the centennial. Alternative Answer: The themes for this years' exhibit are the history of public lands and their effect on the environment, who manages the land and why, and how the public uses the land from large companies to individuals.

Moira: What was the most interesting new thing you learned while creating this exhibit?

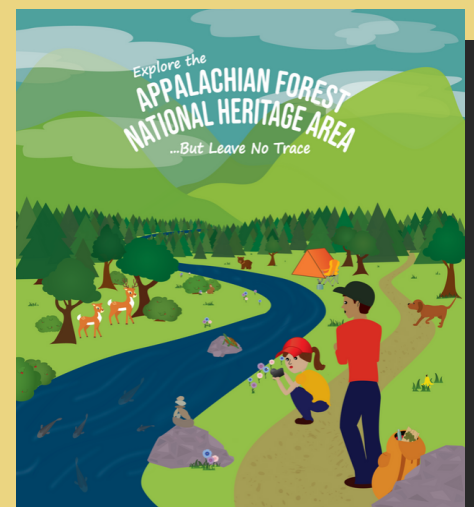
Sarah: The role of the CCC (Civilian Conservation Corps) in developing public lands is absolutely fascinating to me. Public lands truly would not be what they are today without them. In the middle of the Great Depression, the men created dams, recreational areas, and cabins that are still in use today as well as a lot of infrastructure like roads and telephone lines. One spring they planted over 1 million trees on Monongahela National Forest land!

Moira: What are you most excited about for this exhibit?

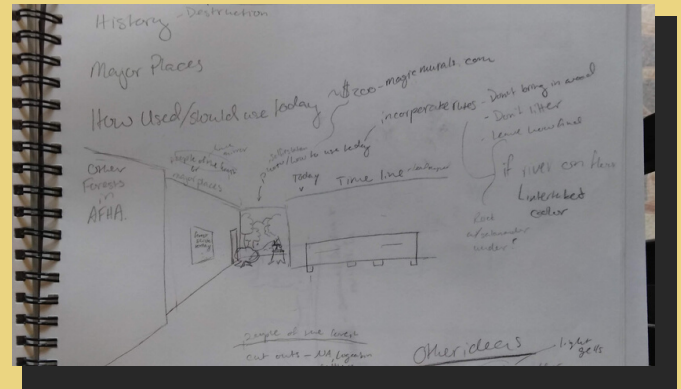
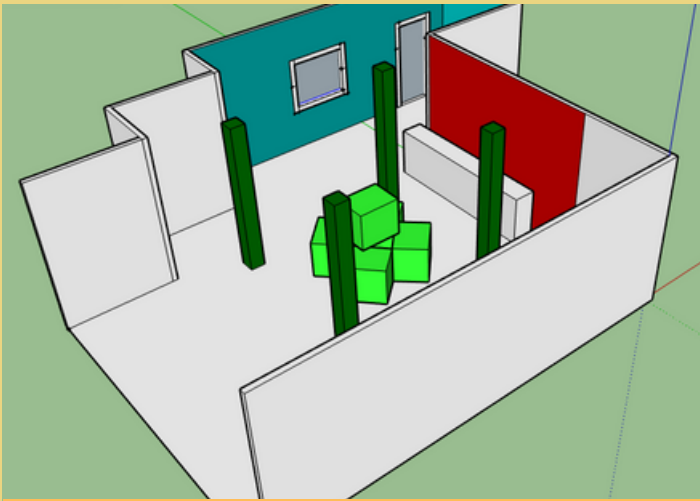
Sarah: Managing public lands is never straight forward, so there are a lot of discussions and controversial topics. I am really excited to be able to discuss 3 of these semi-controversial topics and then allow visitors to express their opinions on them through a voting interactive.



Research!



Sarah's design for a 'Leave No Trace' activity in her exhibit.



What goes into making an exhibit? A ton of planning, research, communication, design, and time are synthesized together to make museum exhibits. The images above and to the right are some of Sarah's processes for planning. Sarah uses Sketch Up to create a 3D space of the museum to plan out where to place objects and cases. She also draws by hand to design wall spaces, and then software on her computer to create better details. She efforts she has put into this exhibit started in September.

Moira: What was the most challenging aspect of creating this exhibit?

Sarah: Understanding the many different missions and laws associated with different public land agencies because they all have their own unique purpose. The best way to do this is to talk to someone from that agency, but let me tell you they are very busy making our public lands amazing and hard to track down!

Moira: What preparations are you taking to ready yourself and the Discovery Center for the 2020 season, considering the pandemic?

Sarah: We have been following CDC's and museum professional networks' guidelines very carefully and are implementing new safety measures as a result. We have had to rethink interactive designs, getting rid of some and putting hand sanitizer by the ones we are keeping. We are also upgrading our cleaning routines, limiting the number of people in the museum at one time, and marking out 6ft on the floor among other things.



Casts of animals feet will be featured in the exhibit -- for visitors to touch and try to ID!

'Exploring OUR Land: Public Land in Appalachian Forest National Heritage Area' opens June 4, 2020.

We are looking forward to seeing you this summer at the Appalachian Forest Discovery Center in Elkins, WV. Be sure to like the Discovery Center on Facebook to stay up to date on upcoming events, programming, and other news!



Events & Announcements

West Virginia Historic Preservation Conference Goes Virtual



The Preservation Alliance of West Virginia is facilitating webinars that would have been in-person seminars at the West Virginia Historic Preservation Conference. All of these webinars are free and include topics such as Historic Tax Credits, rehabilitating historic windows (presented by our very own Hands-On Team), and how to preserve the unique history here. All of the webinars will be recorded and made available on the PAWV website. For any questions about the webinars, contact Danielle at dlapresta@pawv.org

"The transition to virtual presentations has been smooth, and all the presenters have been eager to participate. We've had a good turn-out the last two weeks too, and I think we're reaching a different and broader audience we may not have otherwise," says Executive Director of PAWV, Danielle Parker.

Be sure to register for the webinars ahead of time, using the link below.

**CHECK OUT THE
UPCOMING WEBINARS**

Virtual Programming @ the BHC

The Beverly Heritage Center as been creating virtual programming for Facebook Live each week! Every Saturday at 1 PM, tune in at the Beverly Heritage Center's Facebook page. Here is the upcoming schedule for May:



- **May 16th, 1 PM** Medicine and Hygiene
- **May 23rd, 1 PM** The Battle of Rich Mountain
- **May 30th, 1 PM** Fashion in the 1800s

**LIKE THE
BEVERLY HERITAGE CENTER**

Remote Goat Gallop 5K!

Athurdale is still doing the annual Goat Gallop 5K, but a little differently this year! Participants can run the race from anywhere and upload their times, or they can travel to Athurdale and run the actual course using an interactive course map. Don't like your time? Re-run it!

Registration is \$25, and participants have May 20 - June 20 to complete the race.



REGISITER HERE!

AFNHA Hires Communications Manager

Meet Lukas Ray, AFNHA's new Communications Manager.

A native of Raleigh, NC, Lukas has lived all over the Appalachian region for the past five years. He graduated in 2016 with a B.S. in Recreation Management and is currently completing a M.A. in Appalachian Studies and Nonprofit Administration, all from Appalachian State University.

Lukas believes in preserving our heritage and history through Ecotourism in rural Appalachian communities. He loves the outdoors and hiking. His full-time responsibilities will include social and traditional media, management planning, community outreach and partnerships, and promotion and marketing.

Lukas is looking forward to digging into work in our 18 counties. We are very excited to have him on our team!



ArtSpring Literary Press

Our partners over at ArtSpring are working hard to put together a literary press to share the voices of WV writers.

They are currently accepting submissions for their inaugural poetry journal, May 15 to June 15th. Get your voice heard and apply!



VISIT THE ARTSPRING WEBSITE HERE!

MNF Centennial Art Exhibit

Open Wednesday, June 3, 2020 10:00 AM through Friday, July 24, 2020 11:00 AM.

The USDA Forest Service is hosting an exhibit, with the help of The Arts Center and Eastern National Forests Interpretive Association, to commemorate the Monongahela National Forest's centennial. The exhibit features pieces that are a reflection of the Monongahela from culture and history to beautiful, scenic landscapes. Through a variety of art media, the exhibit showcases and illustrate the many different ways people relate and connect to the Forest.

CHECK OUT THE ARTS CENTER WEBSITE HERE!